

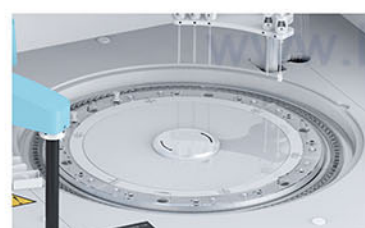
400T/H Automatic Chemistry Analyzer BK-410



Features:

- ①. 50 sample positions.
- ②. 56 reagent positions.
- ③. 120 reaction cuvettes.
- ④. 400 tests per hour.
- ⑤. Probe with anti-collision function, liquid level detection function.

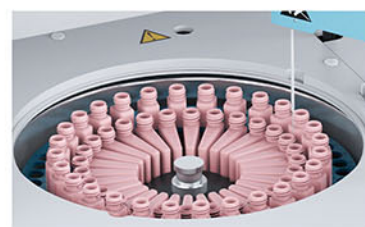
E-mail: export@biobase.com



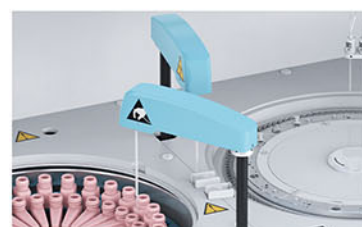
Reaction Tray
37±0.2°C,
real-time monitor.



Mixer Probe
Teflon coating to
avoid cross contamination.



Reagent Tray
2~12°C for
24 hours.



Sample Probe
Liquid level sensor function.
Anti-collision function. Reagent
volume real-time detection.



Washing Probe
Independent 5-step
washing system.



Software
User-friendly
software.

Parameters:

Model	BK-410	
Overall Performance	Throughput	400Tests/hour, ISE(Optional)
	Analysis Method	End-point, Fixed-time, Rate(Kinetic), Turbidimetry
	Certificates	CE, FDA, ISO9001, ISO14001, ISO13485
	System	Optional open or close system, continuous working for 24 hours
Sample & Reagent System	Sample Positions	49 sample positions
	Reagent Position	56 reagent positions
	Sample Volume	2-70µL
	Reagent Volume	20-350µL
	Probe	With anti-collision function, liquid level detection function
	Probe Washing	Automatic washing interior and exterior
Reaction System	Reagent Cooling	2~12°C for 24 hours
	Temperature Control	37±0.2°C, real-time monitoring
	Cuvettes	120 reusable cuvettes
	Mixer Probe	Independent stirring, automatic frequency conversion
Optical System	Washing	Automatic cuvettes washing
	Light Source	Halogen lamp, water-cooling
	Spectrophotometry	Post-spectral spectrophotometry
	Wavelength	340~800nm, <±1nm
Calibration & QC	Absorbance	0~3.5Abs
	Calibration	Linear: K factor, 1-point,2-point and multipoint linear Non-Linear: Spline, Polygon,Index,Ogarithm, Logit-4P, Logit-5P
	Quality Control	Real-time QC, Westgard multi rule, Cumulative Sum Check, Twin Plot(2D)
Data Management	Software	Windows 7/8/10, 32 or 64 bits
	LIS System	Bi-direction, support HL7 protocol
	Interface	LAN port access
Working Conditions	Printer	External, multiple reporting mode available
	Power Supply	AC220V±10%, 50/60Hz(Standard), 110V±10% 60Hz(Optional), 650VA
	Temperature	15~30°C(±2°C)
	Water Consumption	Deionized water<11L/h
Size & Weight	Humidity	40~85%
	External Size (W*D*H)	973*645*520mm
	Net Weight	96kg
	Package Size (W*D*H)	1120*780*1035mm
	Gross Weight	141kg